

# Asia

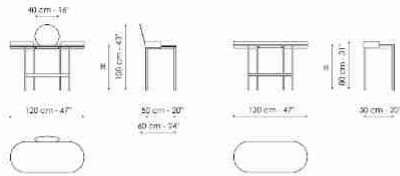


The Asia model is a multifunctional piece of furniture. It can turn from a desk into a vanity through the addition of a mirror. The top features only rounded lines, and it can be made of marble or ceramic, while the structure base is

made of metal. The idea is a blend of form and function, a stylistic sophistication expressed through a daily commitment to harmony.



## Data sheet



**Asia - vanity**  
Width:120cm  
Depth:60cm  
Height:108cm

**Asia - home office**  
Width:120cm  
Depth:50cm  
Height:80cm

## Top

### Marble



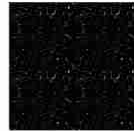
**Marble**  
Calacatta



**Marble**  
Carrara



**Marble**  
Emperador



**Marble**  
Marquina



**Marble**  
Rosso Carpazi



**Marble**  
Saint Denis



**Marble**  
Fior di bosco

### Ceramic



**Silk finish  
ceramic**  
Calacatta  
macchia  
vecchia



**Mat ceramic**  
Laurent

## Structure

### Plus Metal



**Painted metal**  
Mat bronze



**Painted metal**  
Mat lead



**Painted metal**  
Mat pearl gold

The samples above represent the complete range of materials and finishes available for this product (regardless of the top shape or size, in the case of tables). Fabrics, eco-leather, leather and emery leather shown in this website are a selection. Colors and finishes are approximate and may slightly differ from actual ones. Please visit Bonaldo dealers to see the complete sample collection and get further details about our products.