

# Belt & Cross

Designer: **Alain Gilles**

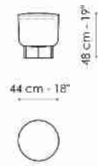
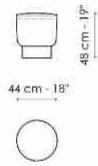


The padded top section is the same in both Belt and Cross, with no straight lines but only curved surfaces that gently complement each other, gracefully floating on their base. They are distinguished by their bases, which give each of them a distinct personality: the Belt pouf's round metal base plays with the concept of stability, while Cross' cross-shaped wooden base is the detail that makes this

accessory immediately recognisable. While their similarities make them ideal for pairing together, like two members of the same family with opposing personalities that complement each other, it is their differences and the variety of possible combinations that create a dynamic, lively and constantly changing environment.



# Data sheet



**Belt**  
 Width:44cm  
 Depth:44cm  
 Height:48cm

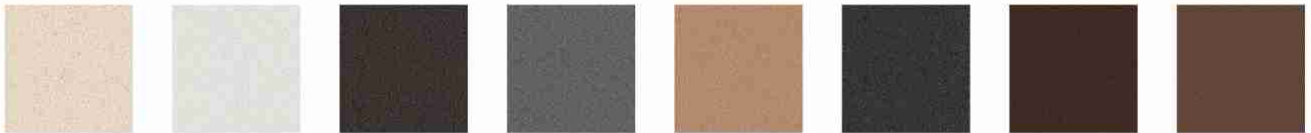
**Cross**  
 Width:44cm  
 Depth:44cm  
 Height:48cm

## Cover

### Leather



Leather Ponza A01    Leather Ponza A02    Leather Ponza A03    Leather Ponza A04    Leather Ponza A05    Leather Ponza A06    Leather Capri L08    Leather Capri L30



Leather Capri L26    Leather Capri L01    Leather Capri L04    Leather Capri L27    Leather Capri L37    Leather Capri L51    Leather Capri L53    Leather Capri L54

### Fabric - 900



Fabric - Azimut 9B02    Fabric - Azimut 9B08    Fabric - Azimut 9B17    Fabric - Azimut 9B22    Fabric - Azimut 9B26    Fabric - Azimut 9B36    Fabric - Azimut 9B39    Fabric - Azimut 9B42



Fabric - Azimut 9B44    Fabric - Azimut 9B48

## Fabric - Must



Fabric -  
Boemian  
MC40



Fabric -  
Boemian  
MC43



Fabric -  
Boemian  
MC46



Fabric -  
Boemian  
MC47



Fabric -  
Boemian  
MC49



Fabric - Rico  
MA02



Fabric - Rico  
MA04



Fabric - Rico  
MA07



Fabric - Rico  
MA09



Fabric - Rico  
MA11



Fabric - Rico  
MA20



Fabric - Rico  
MA22



Fabric - Rico  
MC39



Fabric - St.  
Moritz  
MC60



Fabric - St.  
Moritz  
MC61



Fabric - St.  
Moritz  
MC62



Fabric - St.  
Moritz  
MC67



Fabric - St.  
Moritz  
MC69



Fabric - St.  
Moritz  
MC76



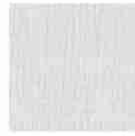
Fabric - St.  
Moritz  
MC81



Fabric - St.  
Moritz  
MC83



Fabric - St.  
Moritz  
MC85



Fabric - Flora  
MD30



Fabric - Flora  
MD31



Fabric - Flora  
MD32



Fabric - Flora  
MD34



Fabric - Flora  
MD35



Fabric - Flora  
MD37



Fabric - Flora  
MD39



Fabric -  
Nacchero  
MD41



Fabric -  
Nacchero  
MD44



Fabric -  
Nacchero  
MD45



Fabric -  
Nacchero  
MD47



Fabric -  
Nacchero  
MD48

## Fabric - Special



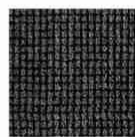
Fabric -  
Brionne  
SP19



Fabric -  
Brionne  
SP20



Fabric -  
Brionne  
SP21



Fabric -  
Brionne  
SP22



Fabric -  
Brionne  
SP23



Fabric - Rella  
SP01



Fabric - Rella  
SP04



Fabric - Rella  
SP05

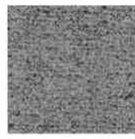




Fabric -  
Diamon Frisé  
SP33



Fabric -  
Diamon Frisé  
SP34



Fabric -  
Diamon Frisé  
SP36



Fabric -  
Diamon Frisé  
SP38



Fabric - Baia  
SP45



Fabric - Baia  
SP48



Fabric - Baia  
SP50



Fabric - Baia  
SP51



Fabric - Baia  
SP52



Fabric - Jurga  
SP54



Fabric - Jurga  
SP55



Fabric - Jurga  
SP57



Fabric - Jurga  
SP58



Fabric - Rella  
SP06



Fabric - Rella  
SP07



Fabric -  
Diamon Frisé  
SP31

## Base - Belt

### Metal



Painted metal  
Mat white



Painted metal  
Mat black



Painted metal  
Mat dove grey



Painted metal  
Mat anthracite  
grey

Metal  
Supreme  
anthracite

### Plus Metal



Painted metal  
Mat bronze



Painted metal  
Mat lead



Painted metal  
Mat pearl gold

### Special Metal





**Metal finish**  
Clouded  
chrome



**Metal finish**  
Brown nickel



**Metal finish**  
Dark nickel

---

## Base - Cross

### Wood



**Veneered  
wood**  
Walnut  
Canaletto



**Veneered  
wood**  
Coal ash

---

The samples above represent the complete range of materials and finishes available for this product (regardless of the top shape or size, in the case of tables). Fabrics, eco-leather, leather and emery leather shown in this website are a selection. Colors and finishes are approximate and may slightly differ from actual ones. Please visit Bonaldo dealers to see the complete sample collection and get further details about our products.