

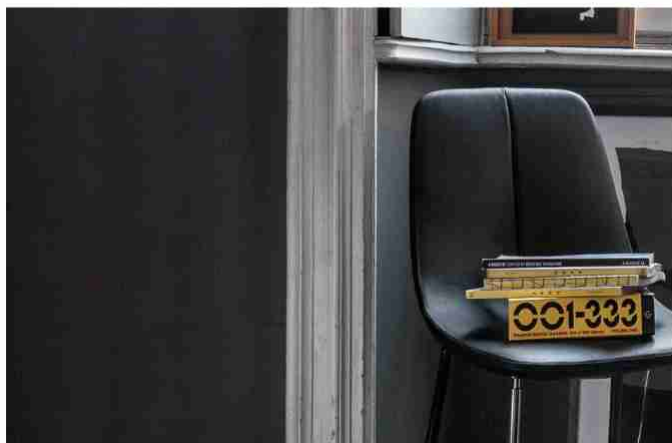
By, By met

Designer: **Bartoli Design**

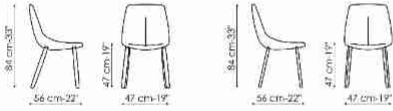


By represents not only a chair, but a true object of affection, an element that gives positive qualities to the spaces of our daily life. By is a chair with a steel frame, comfortable padding in cold foamed polyurethane and upholstery in leather, eco-leather or fabric. The legs, made of solid ash-wood, are available in two chromatic variants. In the By met variant, the legs are in painted

metal or in elegant chrome or black nickel finishes. The design of By and By met is characterised by the line in the middle of the backrest: a sign that becomes a refined sartorial detail, highlighting the exquisite craftsmanship for a result of great versatility, suitable for a use that ranges from the domestic habitat to contract spaces.



Data sheet



By
Width:47cm
Depth:56cm
Height:84cm

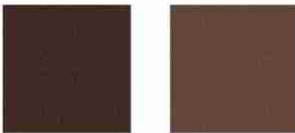
By met
Width:47cm
Depth:56cm
Height:84cm

Cover

Leather



Leather Capri **Leather Capri** **Leather Capri** **Leather Capri** **Leather Capri** **Leather Capri** **Leather Capri** **Leather Capri**
L08 L26 L30 L04 L01 L27 L37 L51



Leather Capri **Leather Capri**
L53 L54

Fabric - 900



Fabric - Azimut **Fabric - Azimut** **Fabric - Azimut** **Fabric - Azimut** **Fabric - Azimut** **Fabric - Azimut** **Fabric - Azimut** **Fabric - Azimut**
9B02 9B08 9B17 9B22 9B26 9B36 9B39 9B42



Fabric - Azimut **Fabric - Azimut**
9B44 9B48

Fabric - Must



Fabric -
Boemian
MC40



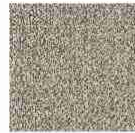
Fabric -
Boemian
MC43



Fabric -
Boemian
MC46



Fabric -
Boemian
MC47



Fabric -
Boemian
MC49



Fabric - Rico
MA02



Fabric - Rico
MA04



Fabric - Rico
MA07



Fabric - Rico
MA09



Fabric - Rico
MA11



Fabric - Rico
MA20



Fabric - Rico
MA22



Fabric - Rico
MC39



Fabric - St.
Moritz
MC60



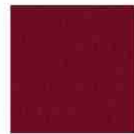
Fabric - St.
Moritz
MC61



Fabric - St.
Moritz
MC62



Fabric - St.
Moritz
MC67



Fabric - St.
Moritz
MC69



Fabric - St.
Moritz
MC76



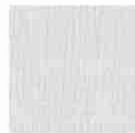
Fabric - St.
Moritz
MC81



Fabric - St.
Moritz
MC83



Fabric - St.
Moritz
MC85



Fabric - Flora
MD30



Fabric - Flora
MD31



Fabric - Flora
MD32



Fabric - Flora
MD34



Fabric - Flora
MD35

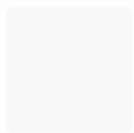


Fabric - Flora
MD37



Fabric - Flora
MD39

Eco Leather



Eco-leather
330



Eco-leather
343



Eco-leather
368



Eco-leather
359



Eco-leather
344



Eco-leather
340



Eco-leather
356



Eco-leather
354



Eco-leather
369



Eco-leather
358



Eco-leather
346



Eco-leather
332



Eco-leather
371



Eco-leather
372



Eco-leather
373



Eco-leather
370



Eco-leather
369



Eco-leather
358

Eco-leather
353

Eco-leather
341

Fabric - Special



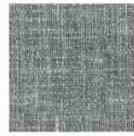
Fabric - Baia
SP45



Fabric - Baia
SP48



Fabric - Baia
SP50



Fabric - Baia
SP51



Fabric - Baia
SP52

Legs - By

Wood



Solid wood
Walnut
painted ash



Solid wood
Coal ash



Solid wood
Natural ash

Legs - By met

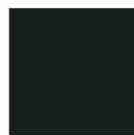
Metal



Painted metal
Mat white



Painted metal
Mat anthracite
grey



Painted metal
Mat brown



Painted metal
Mat black



Painted metal
Mat dove grey



Metal
Supreme
anthracite

Plus Metal



Painted metal
Mat bronze

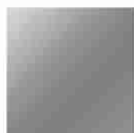


Painted metal
Mat lead



Painted metal
Mat pearl gold

Special Metal



Metal finish

Clouded
chrome



Metal finish

Brown nickel



Metal finish

Dark nickel

The samples above represent the complete range of materials and finishes available for this product (regardless of the top shape or size, in the case of tables). Fabrics, eco-leather, leather and emery leather shown in this website are a selection. Colors and finishes are approximate and may slightly differ from actual ones. Please visit Bonaldo dealers to see the complete sample collection and get further details about our products.