

Pil armchair

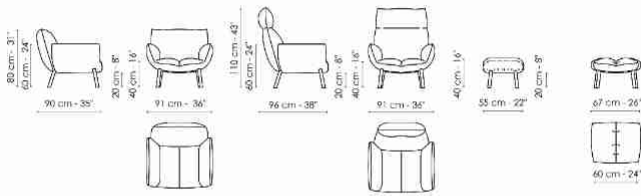


Pil armchair is inspired by the object that is itself symbol of softness, the pillow: usually interpreted as an accessory, here the pillow plays the starring role, shaped and adapted to create an armchair that conveys comfort and relaxation. The main components of Pil are the backrest cushion and the seat cushion. The latter features a fold in the middle, created to generate an enveloping

effect that physically and visually emphasises the feeling of softness. The base has legs in painted metal or with elegant finishes. The Pil collection, in addition to the armchair, also includes a series of coordinated seats: Pil, (chair), Pil up (chair with high backrest), Miss Pil (chair with armrests), Miss Pil up (chair with high backrest and armrests) and Pil too (stool).



Data sheet



Pil armchair
Width:91cm
Depth:90cm
Height:80cm

Pil armchair hi
Width:91cm
Depth:96cm
Height:110cm

**Pil armchair
footrest**
Width:55cm
Depth:67cm
Height:40cm

Cover

Fabric - 900



Fabric - Azimut
9B02



Fabric - Azimut
9B08



Fabric - Azimut
9B17



Fabric - Azimut
9B22



Fabric - Azimut
9B26



Fabric - Azimut
9B36



Fabric - Azimut
9B39



Fabric - Azimut
9B42



Fabric - Azimut
9B44



Fabric - Azimut
9B48

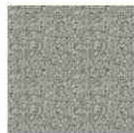
Fabric - Must



Fabric - Boemian
MC40



Fabric - Boemian
MC43



Fabric - Boemian
MC46



Fabric - Boemian
MC47



Fabric - Boemian
MC49



Fabric - Rico
MA02



Fabric - Rico
MA04



Fabric - Rico
MA07



Fabric - Rico
MA09



Fabric - Rico
MA11



Fabric - Rico
MA20

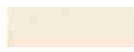




Fabric - Rico
MA22



Fabric - Rico
MC39



Fabric - St.
Moritz
MC60



Fabric - St.
Moritz
MC61



Fabric - St.
Moritz
MC62



Fabric - St.
Moritz
MC67



Fabric - St.
Moritz
MC69



Fabric - St.
Moritz
MC76



Fabric - St.
Moritz
MC81



Fabric - St.
Moritz
MC83



Fabric - St.
Moritz
MC85



Fabric - Flora
MD30



Fabric - Flora
MD37



Fabric - Flora
MD31



Fabric - Flora
MD39



Fabric - Flora
MD32



Fabric -
Nacchero
MD41



Fabric - Flora
MD34



Fabric -
Nacchero
MD44



Fabric - Flora
MD35



Fabric -
Nacchero
MD45



Fabric -
Nacchero
MD47



Fabric -
Nacchero
MD48

Fabric - Special



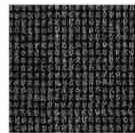
Fabric -
Brionne
SP19



Fabric -
Brionne
SP20



Fabric -
Brionne
SP21



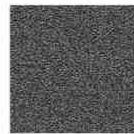
Fabric -
Brionne
SP22



Fabric -
Brionne
SP23



Fabric - Rella
SP01



Fabric - Rella
SP06



Fabric - Rella
SP04



Fabric - Rella
SP07



Fabric - Rella
SP05



Fabric -
Diamon Frisé
SP31



Fabric -
Diamon Frisé
SP33



Fabric -
Diamon Frisé
SP34



Fabric -
Diamon Frisé
SP36



Fabric -
Diamon Frisé
SP38



Fabric - Baia
SP45



Fabric - Baia
SP52



Fabric - Baia
SP48



Fabric - Baia
SP50



Fabric - Baia
SP51

Leather



Leather Capri Leather Capri Leather Capri Leather Ponza Leather Ponza Leather Ponza Leather Ponza Leather Ponza

L08

L26

L30

A01

A02

A03

A04

A05



Leather Ponza Leather Capri Leather Capri Leather Capri Leather Capri Leather Capri Leather Capri Leather Capri

A06

L01

L04

L27

L51

L37

L53

L54

Feet

Metal



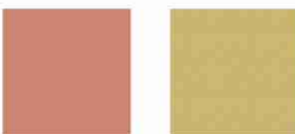
Painted metal Painted metal Painted metal Painted metal Metal
Mat white Mat dove grey Mat anthracite Mat black Supreme
anthracite

Plus Metal



Painted metal Painted metal Painted metal
Mat bronze Mat lead Mat pearl gold

Special Metal



Metal finish Metal finish
Mat copper Mat brass

The samples above represent the complete range of materials and finishes available for this product (regardless of the top shape or size, in the case of tables). Fabrics, eco-leather, leather and emery leather shown in this website are a selection. Colors and finishes are approximate and may slightly differ from actual ones. Please visit Bonaldo dealers to see the complete sample collection and get further details about our products.