

Squaring

Designer: **Giuseppe Viganò**

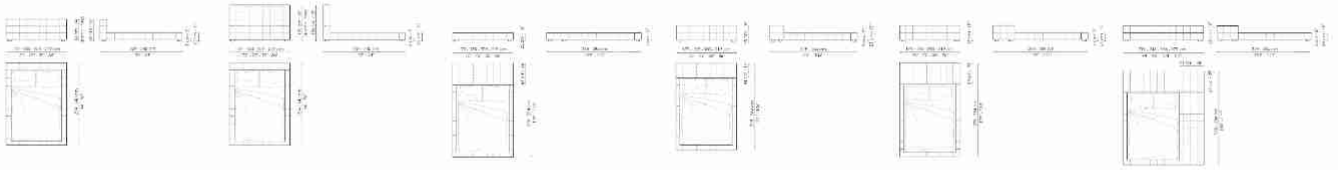


The Squaring bed is an architecture of rest that emphasises the modernity of the geometric shapes and avant-garde execution techniques. With completely removable cover available in fabric, leather or eco-leather, it can be placed at the centre of the room due to its particular design. The bed reaches its maximum

expression in the version with the side unit, thanks to which a real oasis of relaxation is obtained. Numerous versions are made, as regards the sizes and configuration of headboard and bed frame, in order to offer the utmost personalisation. The sleeping area can be completed, finally, with poufs and a bench coordinated with the bed.



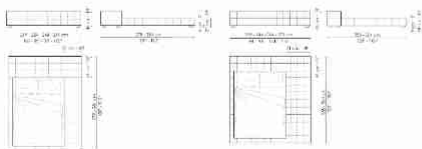
Data sheet



<p>Squaring basso Width:179-183-203-219cm Depth:234-240cm Height:60-65cm</p>	<p>Squaring alto Width:179-183-203-219cm Depth:234-240cm Height:100-106cm</p>	<p>Squaring isola Width:179-183-203-219cm Depth:278-284cm Height:25cm</p>	<p>Squaring isola alta variante A Width:179-183-203-219cm Depth:258-264cm Height:45cm</p>	<p>Squaring isola alta variante B Width:179-183-203-219cm Depth:278-284cm Height:45cm</p>	<p>Squaring penisola Width:239-244-264-279cm Depth:278-284cm Height:45cm</p>
--	---	---	---	---	--



Squaring penisola variante A
 Width:219-224-244-259cm
 Depth:258-264cm
 Height:45cm



<p>Squaring penisola variante B Width:219-224-244-259cm Depth:278-284cm Height:45cm</p>	<p>Squaring penisola variante C Width:239-244-264-279cm Depth:258-264cm Height:45cm</p>
---	---

Cover

Fabric - 900



Fabric - Azimut 9B02	Fabric - Azimut 9B08	Fabric - Azimut 9B17	Fabric - Azimut 9B22	Fabric - Azimut 9B26	Fabric - Azimut 9B36	Fabric - Azimut 9B39	Fabric - Azimut 9B42
----------------------	----------------------	----------------------	----------------------	----------------------	----------------------	----------------------	----------------------



Fabric -
Azimut
9B44



Fabric -
Azimut
9B48

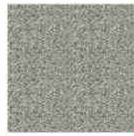
Fabric - Must



Fabric -
Boemian
MC40



Fabric -
Boemian
MC43



Fabric -
Boemian
MC46



Fabric -
Boemian
MC47



Fabric -
Boemian
MC49



Fabric - Rico
MA02



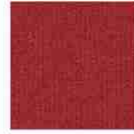
Fabric - Rico
MA04



Fabric - Rico
MA07



Fabric - Rico
MA09



Fabric - Rico
MA11



Fabric - Rico
MA20



Fabric - Rico
MA22



Fabric - Rico
MC39



Fabric - St.
Moritz
MC60



Fabric - St.
Moritz
MC61



Fabric - St.
Moritz
MC62



Fabric - St.
Moritz
MC67



Fabric - St.
Moritz
MC69



Fabric - St.
Moritz
MC76



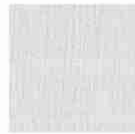
Fabric - St.
Moritz
MC81



Fabric - St.
Moritz
MC83



Fabric - St.
Moritz
MC85



Fabric - Flora
MD30



Fabric - Flora
MD31



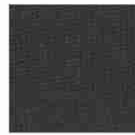
Fabric - Flora
MD32



Fabric - Flora
MD34



Fabric - Flora
MD35



Fabric - Flora
MD37



Fabric - Flora
MD39



Fabric -
Nacchero
MD41



Fabric -
Nacchero
MD44



Fabric -
Nacchero
MD45



Fabric -
Nacchero
MD47



Fabric -
Nacchero
MD48

Fabric - Special



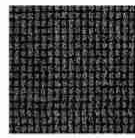
Fabric -
Brionne
SP19



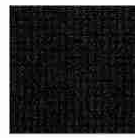
Fabric -
Brionne
SP20



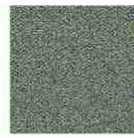
Fabric -
Brionne
SP21



Fabric -
Brionne
SP22



Fabric -
Brionne
SP23



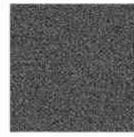
Fabric - Rella
SP01



Fabric - Rella
SP04



Fabric - Rella
SP05



Fabric - Rella
SP06



Fabric - Rella
SP07



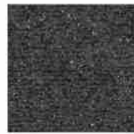
Fabric -
Diamon Frisé
SP31



Fabric -
Diamon Frisé
SP33



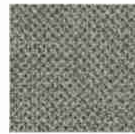
Fabric -
Diamon Frisé
SP34



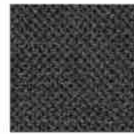
Fabric -
Diamon Frisé
SP38



Fabric
SP39 Ivory -
Varazze



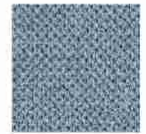
Fabric
SP40 Light
grey - Nebbia



Fabric
SP41 Dark grey
- Black80



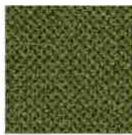
Fabric
SP42 Brick red
- Palinuro



Fabric
SP43 Powder
blue - Navy



Fabric -
Diamon Frisé
SP36



Fabric
SP44 Olive
green - Jesolo



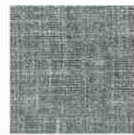
Fabric - Baia
SP45



Fabric - Baia
SP48



Fabric - Baia
SP50



Fabric - Baia
SP51



Fabric - Baia
SP52

Leather



L08



L26



L30



A01



A02



A03



A04



A05



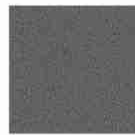
A06



L01



L04



L27



L37



L51

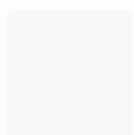


L53



L54

Eco Leather



Eco-leather
330



Eco-leather
343



Eco-leather
368



Eco-leather
359



Eco-leather
344



Eco-leather
340



Eco-leather
356



Eco-leather
354



Eco-leather
369



Eco-leather
358



Eco-leather
346



Eco-leather
332



Eco-leather
371



Eco-leather
372



Eco-leather
373



Eco-leather
370



Eco-leather
353



Eco-leather
341

Feet

Wood



Wood
Anthracite
grey

The samples above represent the complete range of materials and finishes available for this product (regardless of the top shape or size, in the case of tables). Fabrics, eco-leather, leather and emery leather shown in this website are a selection. Colors and finishes are approximate and may slightly differ from actual ones. Please visit Bonaldo dealers to see the complete sample collection and get further details about our products.