

# BONALDO

## Olos pouf

Designer: **Mauro Lipparini**

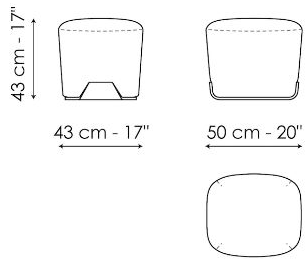


Weich und diskret, der Pouf aus der Olos-Kollektion ist ein Element, das die Einrichtung des Schlafbereichs vervollständigt, aber auch in anderen Bereichen des Hauses seinen perfekten Platz findet. Der Pouf Olos zeichnet sich

durch seine großzügige und abgerundete Polsterung aus, die dank der Basis aus gebogenem Holz, einem typischen Merkmal der Olos-Kollektion, leicht vom Boden abgehoben ist.



# Datenblatt



## Olos pouf

Breite: 43cm

Tiefe : 50cm

Höhe : 43cm

# Finishes

## BEZUG

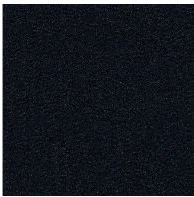
Stoff - 900



**Stoff - Azimut**  
9B02



**Stoff - Azimut**  
9B08



**Stoff - Azimut**  
9B17



**Stoff - Azimut**  
9B22



**Stoff - Azimut**  
9B26



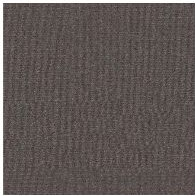
**Stoff - Azimut**  
9B36



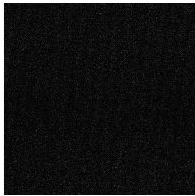
**Stoff - Azimut**  
9B39



**Stoff - Azimut**  
9B42



**Stoff - Azimut**  
9B44



**Stoff - Azimut**  
9B48

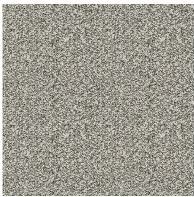
Stoff - Must



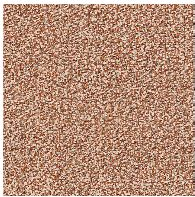
**Stoff - Boemian**  
MC40



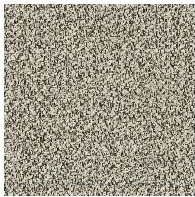
**Stoff - Boemian**  
MC43



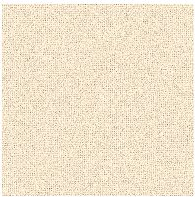
**Stoff - Boemian**  
MC46



**Stoff - Boemian**  
MC47



**Stoff - Boemian**  
MC49



**Stoff - Rico**  
MA02



**Stoff - Rico**  
MA04



**Stoff - Rico**  
MA07



**Stoff - Rico**  
MA09

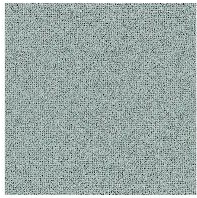


**Stoff - Rico**  
MA11





**Stoff - Rico**  
MA20



**Stoff - Rico**  
MA22



**Stoff - Rico**  
MC39



**Stoff - St. Moritz**  
MC60



**Stoff - St. Moritz**  
MC61



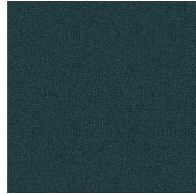
**Stoff - St. Moritz**  
MC62



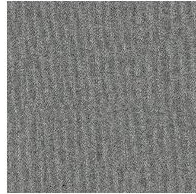
**Stoff - St. Moritz**  
MC67



**Stoff - St. Moritz**  
MC69



**Stoff - St. Moritz**  
MC76



**Stoff - St. Moritz**  
MC81



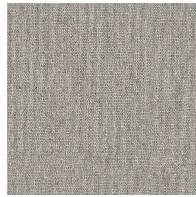
**Stoff - St. Moritz**  
MC83



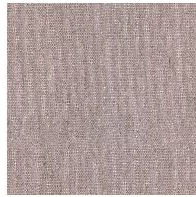
**Stoff - St. Moritz**  
MC85



**Stoff - Flora**  
MD30



**Stoff - Flora**  
MD31



**Stoff - Flora**  
MD32



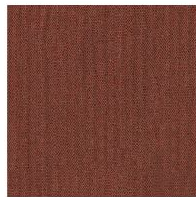
**Stoff - Flora**  
MD34



**Stoff - Flora**  
MD35



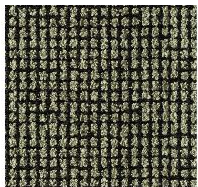
**Stoff - Flora**  
MD37



**Stoff - Flora**  
MD39

Stoff - Special





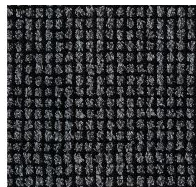
**Stoff - Brionne**  
SP19



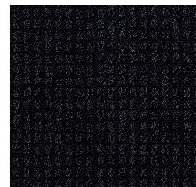
**Stoff - Brionne**  
SP20



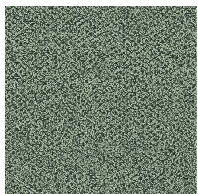
**Stoff - Brionne**  
SP21



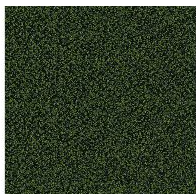
**Stoff - Brionne**  
SP22



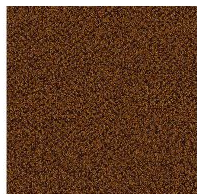
**Stoff - Brionne**  
SP23



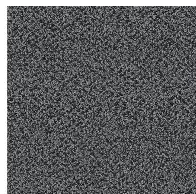
**Stoff - Rella**  
SP01



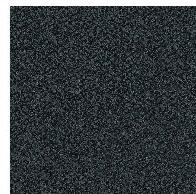
**Stoff - Rella**  
SP04



**Stoff - Rella**  
SP05



**Stoff - Rella**  
SP06



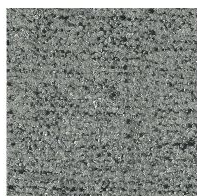
**Stoff - Rella**  
SP07



**Stoff - Diamon Frisé**  
SP31



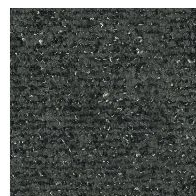
**Stoff - Diamon Frisé**  
SP33



**Stoff - Diamon Frisé**  
SP36



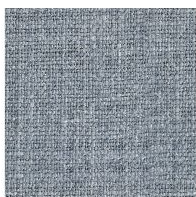
**Stoff - Diamon Frisé**  
SP34



**Stoff - Diamon Frisé**  
SP38



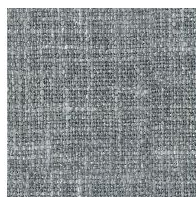
**Stoff - Baia**  
SP45



**Stoff - Baia**  
SP48



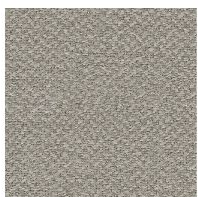
**Stoff - Baia**  
SP50



**Stoff - Baia**  
SP51



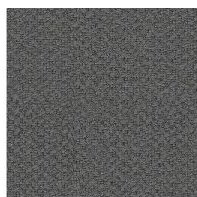
**Stoff - Baia**  
SP52



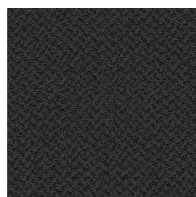
**Stoff - Jurga**  
SP54



**Stoff - Jurga**  
SP55



**Stoff - Jurga**  
SP57



**Stoff - Jurga**  
SP58



---

# BASIS

Holz



**Furnierholz**  
Nussbaumfarben

---

You can find the complete collection of Bonaldo fabrics and leathers on the website <https://www.bonaldo.biz/>

