

BONALDO

Seki

Designer: **Marconato und Zappa**

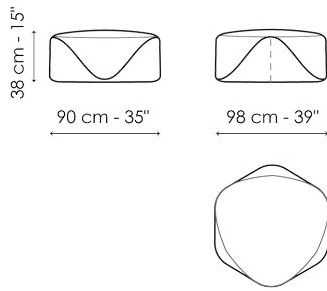


Ähnlich wie von Wasser und Wind geglättete Steine fügen sich die Poufs Seki mit ihrer skulpturalen und markanten Form harmonisch und unbeschwert in den Raum ein. Ihre durch das Fehlen von Kanten und orthogonalen Seiten scheinbar unregelmäßige Struktur erinnert an Formen, die je nach Blickwinkel des Betrachters immer anders aussehen. Der

Bezug, der durch eine geschwungene Linie in zwei Teile geteilt ist, ermöglicht das Spiel mit verschiedenen Materialien: Der untere Teil, der mit dem Boden in Berührung kommt, erinnert an die Wasserlinie, während der obere Teil die Form und die Facetten des Steins nachbildet.

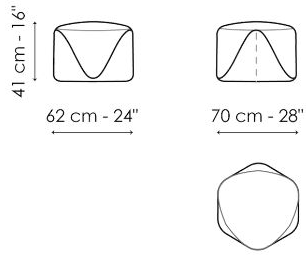


Datenblatt



Seki 98

Breite: 98cm
Tiefe: 90cm
Höhe: 38cm



Seki 70

Breite: 70cm
Tiefe: 62cm
Höhe: 41cm

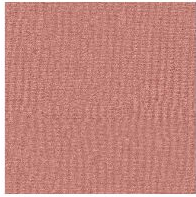
Finishes

BEZUG

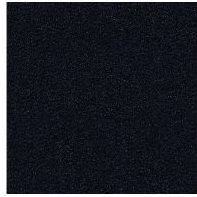
Stoff - 900



Stoff - Azimut
9B02



Stoff - Azimut
9B08



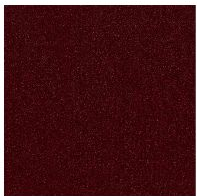
Stoff - Azimut
9B17



Stoff - Azimut
9B22



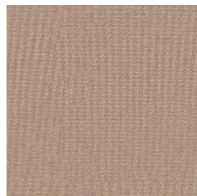
Stoff - Azimut
9B26



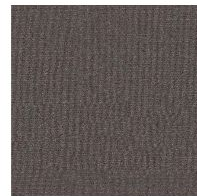
Stoff - Azimut
9B36



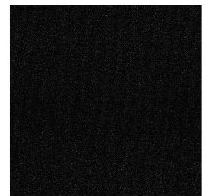
Stoff - Azimut
9B39



Stoff - Azimut
9B42



Stoff - Azimut
9B44

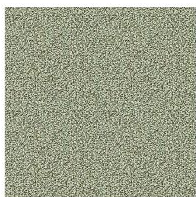


Stoff - Azimut
9B48

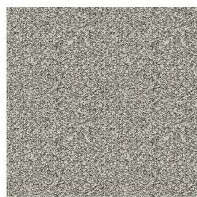
Stoff - Must



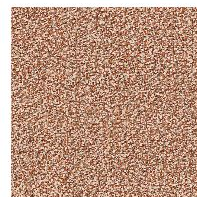
Stoff - Boemian
MC40



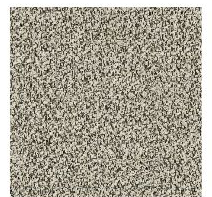
Stoff - Boemian
MC43



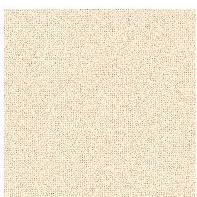
Stoff - Boemian
MC46



Stoff - Boemian
MC47



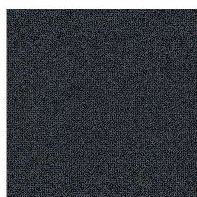
Stoff - Boemian
MC49



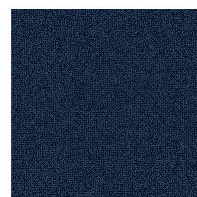
Stoff - Rico
MA02



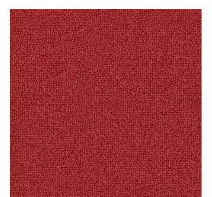
Stoff - Rico
MA04



Stoff - Rico
MA07



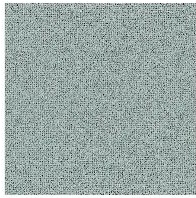
Stoff - Rico
MA09



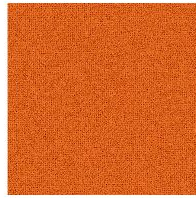
Stoff - Rico
MA11



Stoff - Rico
MA20



Stoff - Rico
MA22



Stoff - Rico
MC39



Stoff - St. Moritz
MC60



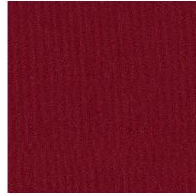
Stoff - St. Moritz
MC61



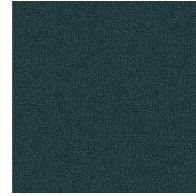
Stoff - St. Moritz
MC62



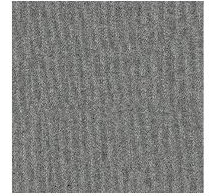
Stoff - St. Moritz
MC67



Stoff - St. Moritz
MC69



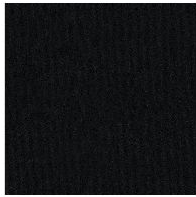
Stoff - St. Moritz
MC76



Stoff - St. Moritz
MC81



Stoff - St. Moritz
MC83



Stoff - St. Moritz
MC85



Stoff - Flora
MD30



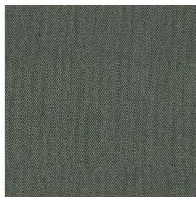
Stoff - Flora
MD31



Stoff - Flora
MD32



Stoff - Flora
MD34



Stoff - Flora
MD35



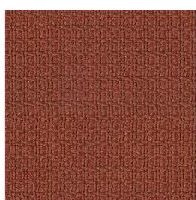
Stoff - Flora
MD37



Stoff - Flora
MD39



Stoff - Nacchero
MD41



Stoff - Nacchero
MD44

Stoff - Nacchero
MD45

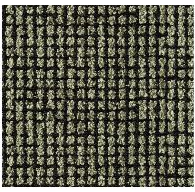


Stoff - Nacchero
MD47

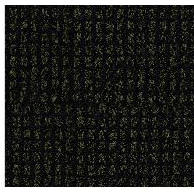


Stoff - Nacchero
MD48

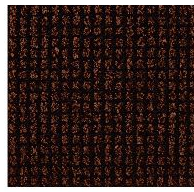
Stoff - Special



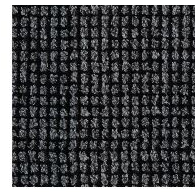
Stoff - Brionne
SP19



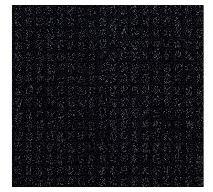
Stoff - Brionne
SP20



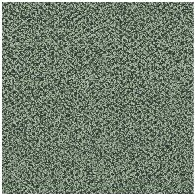
Stoff - Brionne
SP21



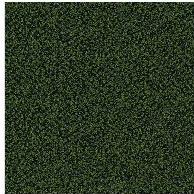
Stoff - Brionne
SP22



Stoff - Brionne
SP23



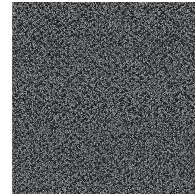
Stoff - Rella
SP01



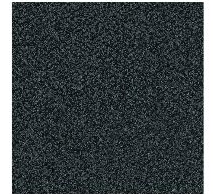
Stoff - Rella
SP04



Stoff - Rella
SP05



Stoff - Rella
SP06



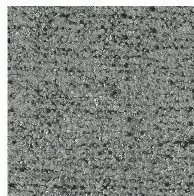
Stoff - Rella
SP07



Stoff - Diamon Frisé
SP31



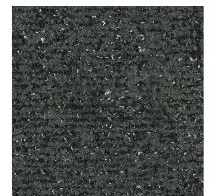
Stoff - Diamon Frisé
SP33



Stoff - Diamon Frisé
SP36



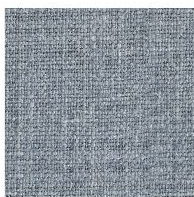
Stoff - Diamon Frisé
SP34



Stoff - Diamon Frisé
SP38



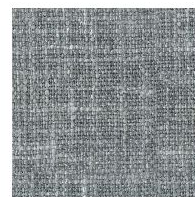
Stoff - Baia
SP45



Stoff - Baia
SP48



Stoff - Baia
SP50



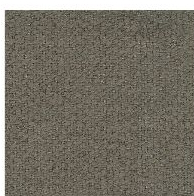
Stoff - Baia
SP51



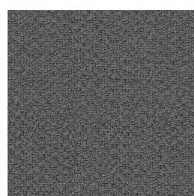
Stoff - Baia
SP52



Stoff - Jurga
SP54



Stoff - Jurga
SP55



Stoff - Jurga
SP57



Stoff - Jurga
SP58

You can find the complete collection of Bonaldo fabrics and leathers on the website <https://www.bonaldo.biz/>